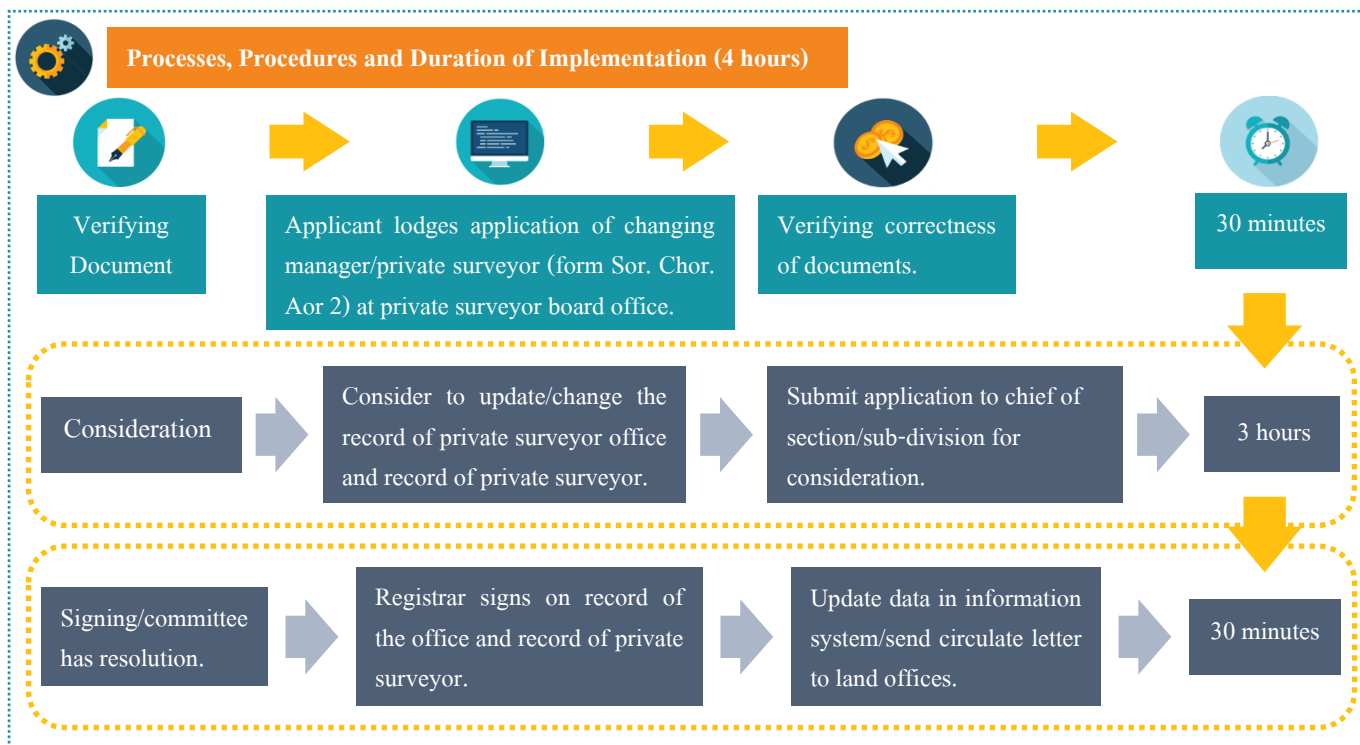


## Informing to Become or Leave from Private Surveyor and Informing of Changing Office's Manager (conducting by himself/herself)



### Fee

Fee: - Baht.



### Service Delivery Channels

- Private surveyor board office.
- Open daily 8.30 - 16.30 hrs.



### Contact/Complaint Channels

- (1) Private Surveyor Board Office Telephone Number: 0 2141 5744 - 5
- (2) DOL's Damrongdhama Center Telephone Number: 0 21415678 - 9
- (3) Complaint Section, Office of the Secretary of DOL, The Government Complex Commemorating His Majesty, Rathaprasasanabhakti Building, Chaeng Wattana Road, Thung Song Hong Sub – District, Laksi District, Bangkok 10210
- (4) Service Center of Office of the Permanent Secretary, Prime Minister Office, P.O. box 1111, No. 1 Pissanulok Road, Dusit, Bangkok 10300/Hotline: 1111
- (5) Complaint Center of Corruption in Public Sector (Office of Public Sector Anti – Corruption Commission: PACC) No. 99 , Moo 4, Software Park Building, 2th Floor, Chaeng Wattana Road, Klong Klua Sub - District, Pak Kret District, Nonthaburi 11120, Hotline 1206/Telephone Number: 0 2502 6670 - 80 ext. 1900, 1904 - 7, Facsimile: 0 2502 6132, [www.pacc.go.th/www.facebook.com/PACC.GO.TH](http://www.pacc.go.th/www.facebook.com/PACC.GO.TH)



### Relevant Laws

- Regulation of the Private Surveyor Board on Informing of Manager Name, Surveyor Name and Informing the Relocation Private Surveyor Office B.E. 2535
- Regulation of the Private Surveyor Board on Informing of Manager Name, Surveyor Name and Informing the Relocation Private Surveyor Office (Volume 2) B.E. 2536



### Evidence Attached to Application

#### **Document confirming authentic issued by government agency**

- Private surveyor identification card which private surveyor sign to certify by himself/herself.

#### **Additional Document**

- Application of informing of changing office's manager or private surveyor (form Sor. Chor. Aor 2)
- License of private surveyor which private surveyor sign to certify by himself/herself.
- Power of attorney (if any), seal stamp: 30 Baht.